



 XPERIENCE



# TOP 400 IN NAMIBIA

Group of maximum 40 pax

28 October – 09 November 2023



 XPERIENCE





# Content

---

- **Travel time**
- **Map**
- **Flights**
- **Hotels**
- **Program**
- **Budget**
- **Practical Information**



# Travel time

Namibia is a holiday country that you can visit throughout the year. Depending on what exactly you want to see and do, you might be better off going in one month than another.

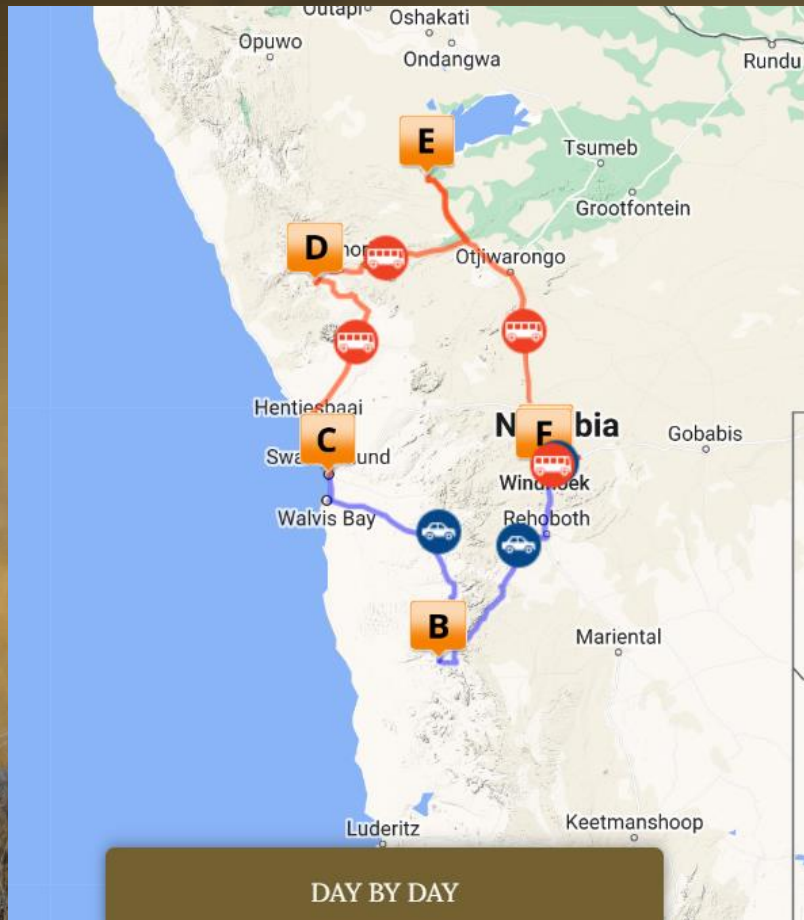
Due to the rainy season, there is a lot of food in January to April for wildlife. Animals scatter as a result.

In March and April, you do have a better chance of seeing young animals that start discovering the world, at the hand (paw) of the adults.

From May on, the water level drops and so animals move more and more towards water holes. So it becomes easier to spot wildlife.



# Map





# Flights

---

## Flights with Ethiopian Airlines:

### OUTBOUND FLIGHT

Saturday 28th of October

Brussels – Addis Abeba

22h15 – 06h15 (29th of October)

Addis Abeba – Windhoek

08h35 – 13h20

### RETURN FLIGHT

Wednesday 8th of November

Windhoek – Addis Abeba

14h30 – 21h20

Addis Abeba – Brussels

01h00 – 06h15 (9th of November)

 XPERIENCE





# Hotels

## Hilton Hotel

Find us close to the central business district in Windhoek. We're within 500 meters of Independence Museum and the Craft Market, and one kilometer away from the Nationalgalerie von Namibia. Our Skybar and rooftop pool both offer panoramic views of the city, and we have a spa, 24-hour fitness center, and five on-site bars and restaurants.

Panoramic city and mountain views, high floor, LCD TV, sound-proofed windows

Enjoy a beautiful view of the city and mountain in this stylish room featuring a king-sized bed and sound-proofed windows. Catch up with work in the flexible work space and stay connected with WiFi access (fees apply). Unwind in front of the 32-inch LCD TV or freshen up in the elegant bathroom with separate rain shower.



# Hilton





# Hotels

## Le Mirage Resort & Spa

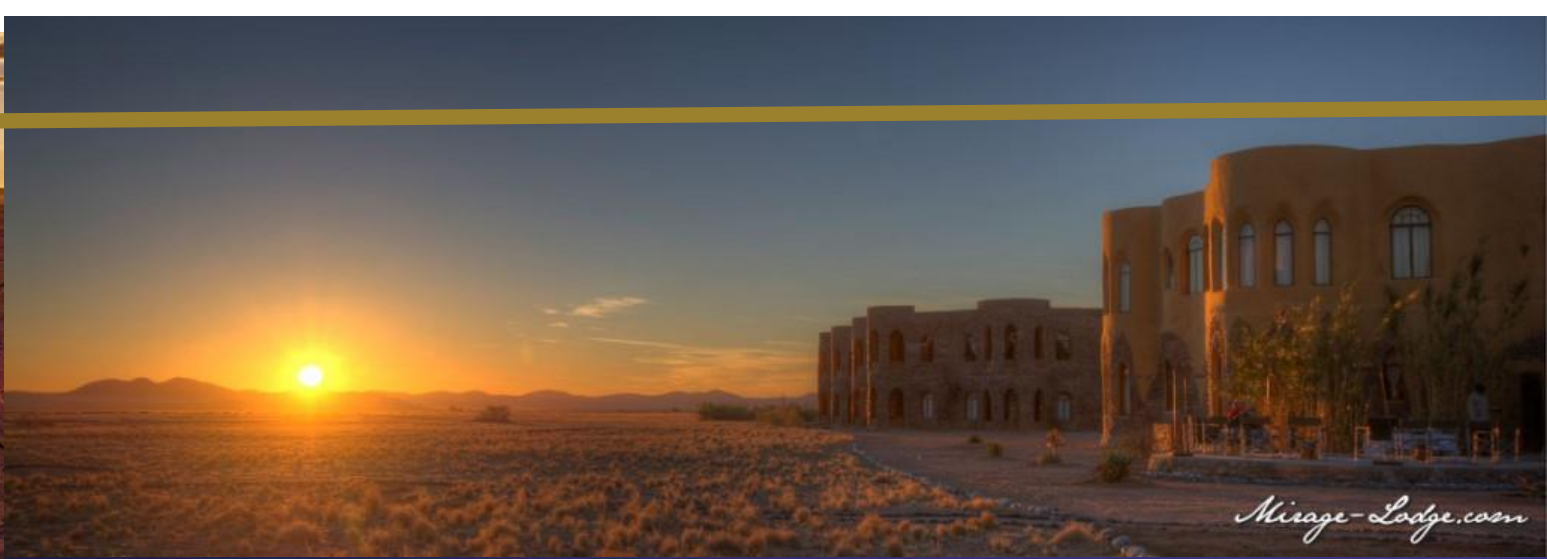
Le Mirage Resort & Spa is a unique construction in the Sossus area. It is situated 21 km from the Sesriem gate to Sossusvlei. This makes it one of the lodges closest to the Sossusvlei and the ideal place to stay when you want to visit the highest dunes in the world!

Our Mystique Spa offers its guests the opportunity to reinvigorate themselves in stress-relieving or rejuvenating massages in our Spa. We have a variety of massage rooms, an Ancient massage area, and a Jacuzzi.

The Sossusvlei offers a souvenir shop with books, African jewellery and clothing. There is also an adventure centre, which can organise nature drives, hot air balloon rides and more.



# Le Mirage





# Hotels

---

## Strand Hotel

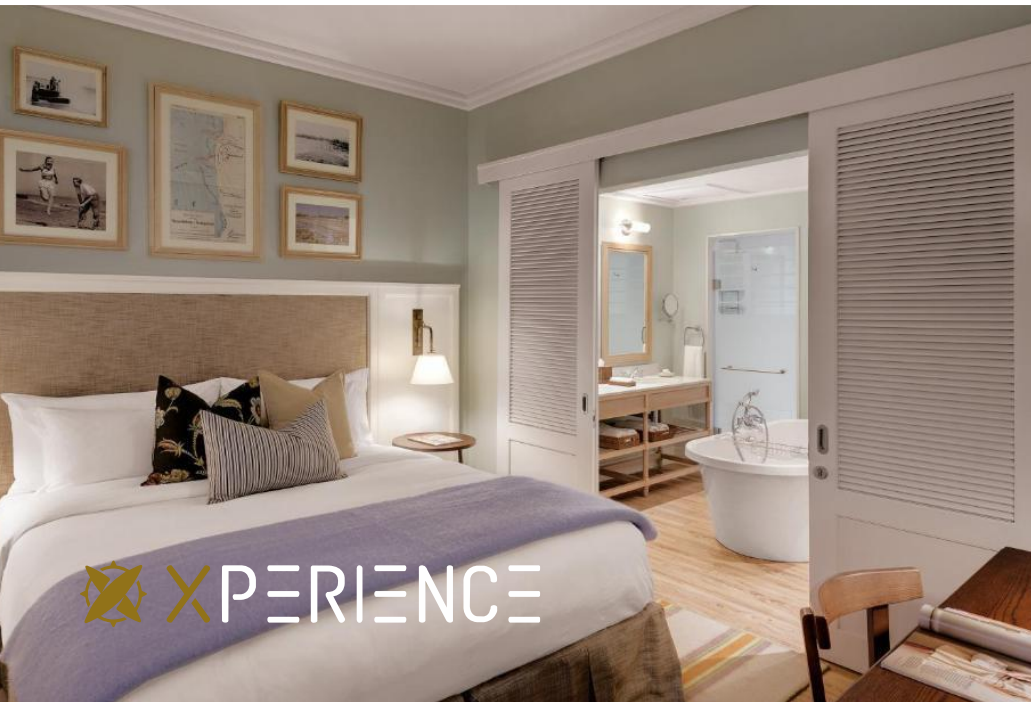
Located at the promenade with views of the ocean, Strand Hotel Swakopmund features a spa, 3 restaurants and bars. It offers a 24-hour front desk and conference facilities. Elegantly furnished, the rooms are equipped with air conditioning, minibars and TV. Guests can enjoy sea or garden views. The bathroom are fitted with a hair dryer.

The hotel has a deli restaurant, a seafood restaurant and a small brewery, which also specialises in Namibian and German meat dishes. Drinks and snacks can be enjoyed at the lounge bar or at the pavilion on the beach. Room service is available. The spa offers a variety of massages and also features a rooftop garden with water features. Guests can work out for free in the hotel's fitness centre.

At Strand Hotel Swakopmund you will find a private beach area, a garden, a tour desk and luggage storage.



# Strand



 XPERIENCE





# Hotels

## Twyfelfontein Country Lodge

A true landmark in the heart of one of the world's most spectacular wilderness areas. Twyfelfontein in Damaraland—a UNESCO World Heritage Site—is home to one of the most extensive collections of rock-art engravings in Southern Africa.

Not only did the Khoi-San and other ancient tribes leave us with a rich cultural legacy, but the area is also home to natural wonders, including Doros Crater, Burnt Mountain, Organ Pipes, Petrified Forest, and desert-adapted animals. The desert-adapted elephant is undoubtedly one of the most well-known sightings.

The lodge—nestled along the mountainside—blends beautifully with its surroundings. Its design complements the sandstone rock formations with minimal visual impact on this picturesque landscape, utilizing natural stone, carefully selected paint colors, and thatched roofs. Enjoy the beautiful views of the Huab Valley, desert plains, and distant mountains from the deck provide hours of relaxed comfort, peace, and tranquility. Twyfelfontein is more than just a place to stay—it is a destination in and of itself.



# Country Lodge



 XPERIENCE





# Hotels

## Epacha Game Lodge & Spa

A true landmark in the heart of one of the world's most spectacular wilderness areas. Twyfelfontein in Damaraland—a UNESCO World Heritage Site—is home to one of the most extensive collections of rock-art engravings in Southern Africa.

Not only did the Khoi-San and other ancient tribes leave us with a rich cultural legacy, but the area is also home to natural wonders, including Doros Crater, Burnt Mountain, Organ Pipes, Petrified Forest, and desert-adapted animals. The desert-adapted elephant is undoubtedly one of the most well-known sightings.

The lodge—nestled along the mountainside—blends beautifully with its surroundings. Its design complements the sandstone rock formations with minimal visual impact on this picturesque landscape, utilizing natural stone, carefully selected paint colors, and thatched roofs.

Enjoy the beautiful views of the Huab Valley, desert plains, and distant mountains from the deck provide hours of relaxed comfort, peace, and tranquility. Twyfelfontein is more than just a place to stay—it is a destination in and of itself.





 XPERIENCE





# Hotels

## Country Club Hotel

WINDHOEK  
COUNTRY CLUB  
RESORT

With an 18-hole golf course and casino, this hotel offers luxurious accommodation with free Wi-Fi and is 3 km from Eros Airport. The property has a swimming pool and a river to enjoy a swim. The rooms and suites at the Windhoek Country Club Resort include 24-hour room service and are equipped with satellite TV and a seating area. The bathroom is private and has a bathtub. Windhoek Country Club has a sun terrace and several bars and restaurants offer a selection of South African meats, fresh seafood and salads.



# Country Club



 XPERIENCE







 XPERIENCE





# Program

---

*DAY 1: Flight to Windhoek via Addis Abeba*

*DAY 2: Arrival, meet & greet at the airport  
1n Hilton Hotel*

*DAY 3: Self drive to Sossusvlei in 4x4's  
2n in Le Mirage Desert Resort & Spa*

*DAY 5: Self drive to Swakopmund – 2n Strand Hotel*

*DAY 7: Bus drive to Damaraland – 2n Twyfelfontein Country Lodge*

*DAY 9: Bus drive to Epacha – 2n Epacha Game Lodge & Spa*

*DAY 11: Bus drive to Windhoek – 1n Country Club Hotel*

*DAY 12: Flight to Brussels via Addis Abeba*

*DAY 13: Arrival in Brussels*



# Program

## Type of transport

From 29/10 – 01/11: Toyota Fortuner or similar – 4x4. Including 2-way radios and satellite phone.

From 01/11 – 08/11: Coach transport including driver & fuel.





# Program

## Day 1 – 28/10

- 19h00 Meet & greet with someone from Xperience at the airport and check-in together
- 22h15 Departure of the flight to Addis Abeba

## Day 2 – 29/10

- 06h15 Arrival in addis Abeba
- 08h35 Departure of the flight to Windhoek
- 13h20 Arrival in Windhoek – meet & greet at the airport with pastries & drinks  
Pick up rental cars & drive to Hilton Hotel together with local guide
- 16h00 Guided city walk of 45min to stretch the legs
- 18h30 Dinner at the hotel





# Program

---

## Day 3 – 30/10

- 07h30 Breakfast at the hotel
- 08h30 Self drive to Le Mirage Resort & Spa
- 13h30 Arrival & lunch in Le Mirage
- Free time at the hotel
- 19h00 Dinner under the stars with a local choir (close to the lodge)



# Program

## Day 4 – 31/10

- 06h00 Visit of Sossusvlei – selfdrive with guide
- 10h00 EXCLUSIVE SURPRISE brunch in the Sossusvlei!
- 13h00 Lunch in Le Mirage
- Free time at the hotel
- 19h00 Dinner at the lodge



 XPERIENCE





# Program

Day 5 – 01/11

- 07h00 Breakfast at Le Mirage
- 08h00 Drive to Swakopmund
- 13h30 Lunch @ Strand Hotel
- 15h30 30 min camel ride
- 16h00 Drop off cars and switch to bus
- 19h00 Dinner at Altstadt Restaurant & Biergarten



# Program

## Day 6 – 02/11

- 06h45 Breakfast at Strand Hotel
- 07h45 Pickup from the hotel for transfer to Walvis Bay
- 08h30 Start boat trip: classic marine dolphin cruise  
3,5hrs catamaran cruise with sightings of pelicans, seals, dolphins, sea turtles and Mola fish.  
Refreshments include sparkling wine, selected drinks, oysters, biscuits & cheese, salty snacks.
- 12h30 Lunch at Anchors Restaurant at the Jetty (Walvis Bay)
- 14h30 Transfer back to Swakopmund
- 15h00 Free afternoon
- 19h00 Dinner at The Tug Restaurant





# Program

## Day 7 – 03/11

- 07h00 Breakfast at the hotel
- 08h00 Bus drive to Twyfelfontein Country Lodge
- 13h30 Lunch at the lodge
- 16h00 Nature walk (1,5h)
- 19h00 Dinner at the lodge



# Program

## Day 8 – 04/11

- 07h00 Breakfast at the lodge
- 08h00 Visit the UNESCO sit pethroglyphs & rock engravings – by bus
- 13h00 Lunch at the lodge
- 15h30 Ephemeral River Drive in search of the desert elephant
- 19h00 Dinner at the lodge

 XPERIENCE





# Program

## Day 9 – 05/11

- 07h30 Breakfast at the lodge
- 08h30 Bus drive to Epacha Game Lodge & Spa
- 13h30 Lunch at the lodge
- 15h30 Free afternoon – time to enjoy the spa facilities, lay by the pool
- 19h00 Boma dinner under the stars

 XPERIENCE





# Program

## Day 10 – 06/11

- 07h00 Breakfast at the lodge
- 08h00 Full day game drive at Etosha National Park including picknick lunch
- 19h00 Dinner at the lodge



# Program

---

## Day 11 – 07/11

- 07h00 Breakfast at the lodge
- 08h00 Bus drive to Windhoek
- 13h30 Lunch in Okapuka Safari Lodge (close to Windhoek)
- 15h30 Visit the Monte Cristo project + short presentation
- 18h00 Arrival at Country Club Hotel
- 19h00 Dinner at the hotel



# Program

## Day 12 – 08/11

- 08h30 Breakfast at the hotel
- 12h00 Drop off rental cars at the airport en check in for the flight
- 14h30 Flight departs to Addis Abeba
- 21h20 Arrival in Addis Abeba

## Day 13 – 09/11

- 01h00 Departure to Brussels
- 06h15 Arrival in Brussels – WELCOME HOME



# Budget

## Included in the price:

- International flights in economy with Ethiopian Airlines
- Rental cars (up to 4 drivers per car included) + bus rental
- Local tour guide
- 1n Hilton Hotel, 2n Le Mirage, 2n Strand Hotel, 2n Twyfelfontein Country Lodge, 2n Epacha, 1n Country Club Hotel
- All meals & drinks, activities and services as mentioned in the program
- Travel Application (the app)

## Not included in the price:

- Optional activities
- Gratuities, portorage, tips
- Cancellation and travel insurance
- Personal expenses
- Single supplement: 637 euro
- Supplement for business flights: 3.300 EUR per person

Price per person

€ 4.367



# Insurance

## Cancelation insurance:

- 269 euro per person.
- 204 euro per person if 2 or more people from the same family (domiciled at the same address) are travelling together.

## Cancelation & assistance insurance:

- 335 euro per person.
- 241 euro per person if 2 or more people from the same family (domiciled at the same address) are travelling together.

### **IMPORTANT:**

**A proof of assistance insurance in English is obliged for travelling to Namibia.**

**If you already have an insurance, please double check if the amount of refund is high enough.**

- **In case of cancelation: must be at least 4.367 euro.**
- **In case of assistance: medical costs abroad up to 1.000.000 euro; repatriation unlimited.**



# Formalities:

---

## Which documents do you need for travelling to Namibia?

- An international passport, valid until 6 months after return.
- A proof of assistance insurance in English.

## Do you need any vaccinations?

- No
- In the north of the country (Etosha National Park) you are staying 2 days in a moderate malaria risk zone. You are not obliged to take any medication for this but it is best to discuss this with your doctor.



# Information

## **Country & Capital:**

Namibia, officially the Republic of Namibia, is a country in Southern Africa. Its western border is the Atlantic Ocean. It shares land borders with Zambia and Angola to the north, Botswana to the east and South Africa to the south and east.

## **Official language:**

Namibia, despite its scant population, is home to a wide diversity of languages, from multiple language families: Germanic, Bantu, and the various Khoisan families. When Namibia was administered by South Africa, Afrikaans, German, and English enjoyed an equal status as official languages. Upon Namibian independence in 1990, English was enshrined as the nation's sole official language in the constitution of Namibia.

## **Official Religion:**

Religion in Namibia is dominated by various branches of Christianity, with more than 90 percent of Namibian citizens identifying themselves as Christian.

## **Health:**

No specific vaccinations are required.

## **Travel documents:**

International passport, valid for at least 6 months after return.



# Event Application

Especially for this event, we will create a unique and personalized Event App.

The following components will be integrated;

- Practical information
- Information about the destination and the different venues with a little plan & map
- Program & Timing
- Profile & info about the participants
- News updates
- Exclusive integrated “Instagram” page
- Push notifications for last minute news

